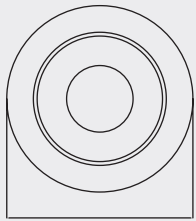


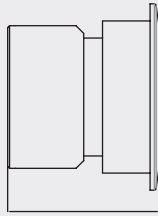
MOVABLE GRANAT

Product and Technical Details

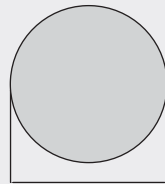
MARKALED
LIGHTING FOR JEWELRY



49 mm



40 mm



45 mm



TECHNICAL DATA

Information

Body:	Aluminium body
Dimensions:	Ø 49 x 40 mm
LED:	CREE-USA
Warranty:	5 years
Total Power of Luminaire (watt):	3
Luminous Flux of Luminaire/Lumen (lm):	406
Color Rendering Index (CRI):	CRI >80-90
Inner Cutting Size:	Ø 45 mm
Control Options:	DALI, 1-10V, Triac

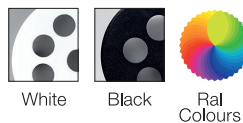


Color Temperature Options



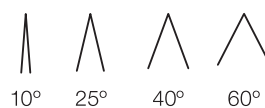
6500K 5000K 4000K 3000K

Body Color Options



White Black Ral Colours

Beam Angle Options



10° 25° 40° 60°

MARKALED
LIGHTING FOR JEWELRY

P: +90 212 438 50 58
E: info@markaled.com
W: www.markaled.com

Head Office

Muratpasa Mah. Siteler Cad. No: 2-4-2
Bayrampasa / Istanbul / TURKIYE